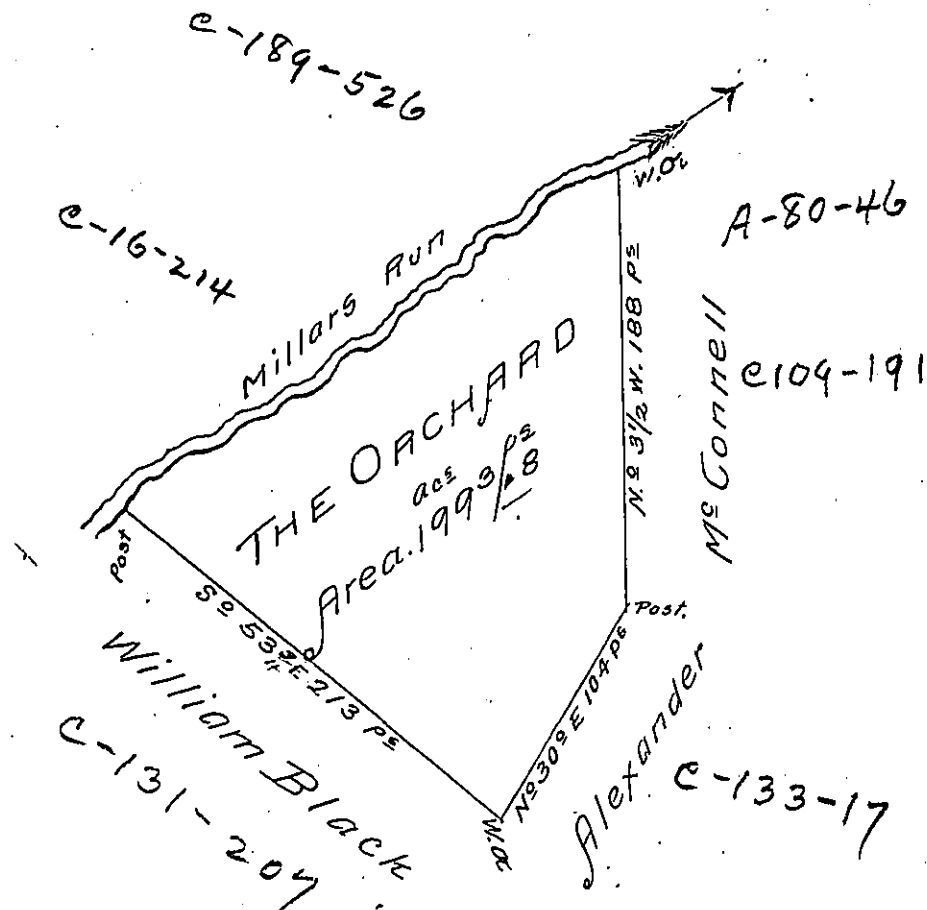


(155)



Courses of copy^e Run

S° 58° W	58	Poles
S° 50° W	100	D ^s
S° 61° W	89	D ^s
S° 29° W	16	D ^s
Total. 263 P ^s		

A Draught of a survey called ye "Orchard" situate on Millers Run in Washington County containg. 199 ac^s 68 P^s Strict Measure, executed Mch ye 31st 1786 in Consequence of a Certifi^d for 200 ac^s in the name of ^{Francis} ~~Hugh~~ Sprowl granted to him by the Commiss^s appointed by Virg^a to adjust the Claims to unpatented Lands in the Counties. Monong^{ia} Yohg^a and Ohio and duly entered with the County Surveyor as appears from the List of Entries transmitted from the Surveyor Generals Office

Ent^d 7th June 1780 Ret^d 18th Jan^y. 1787.

In^o Lukens Esq^r S. Gen^l Presley Nevill } D.S.
 Matt^w Ritchie }

IN TESTIMONY that the above is a copy of the original remaining on file in the Department of Internal Affairs of Pennsylvania, made conformably to an Act of Assembly approved the 16th day of February, 1833, I have hereunto set my Hand and caused the Seal of said Department to be affixed at Harrisburg, this thirtieth day of November 1906

Loach R. Perry
 Secretary of Internal Affairs.